

OUTDOOR

FENICE



EN

OUTDOOR



Realized to face every kind of environmental strain, Fenice outdoor LCDs guarantee full efficiency and wonderful pictures both with low and high temperatures (-38° +55°).

The strong metallic frame allows you to install them in places in harness with the public and the

frontal glass completes the degree of protection. This one, thanks to the antiglare treatment, stops the UV rays and guarantees clear images in any lighting condition.

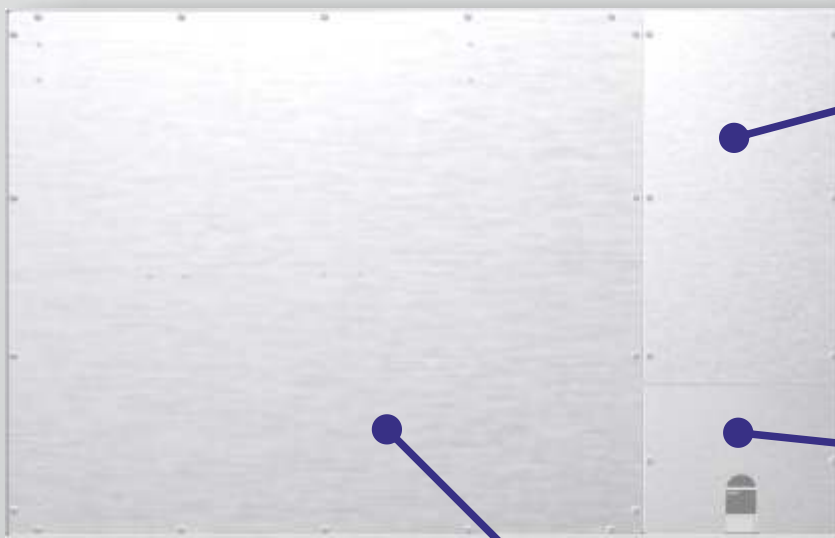
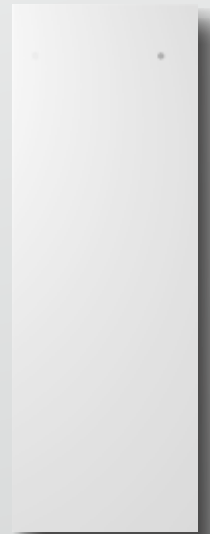
The container, that is realized according to the IP66 protection rules, prevents dust and water jets from entering. This means lower maintenance costs and a major product reliability.

The integrated pc is based on Intel and allows a full interaction with the outside world.

Since there are no fans and disks, maintenance actions are drastically reduced.

The hanger brackets for the wall or ceiling fixing make the monitor installation easier, because they are ready to be used.

Profile



PC Room

Cable Room

Main Room

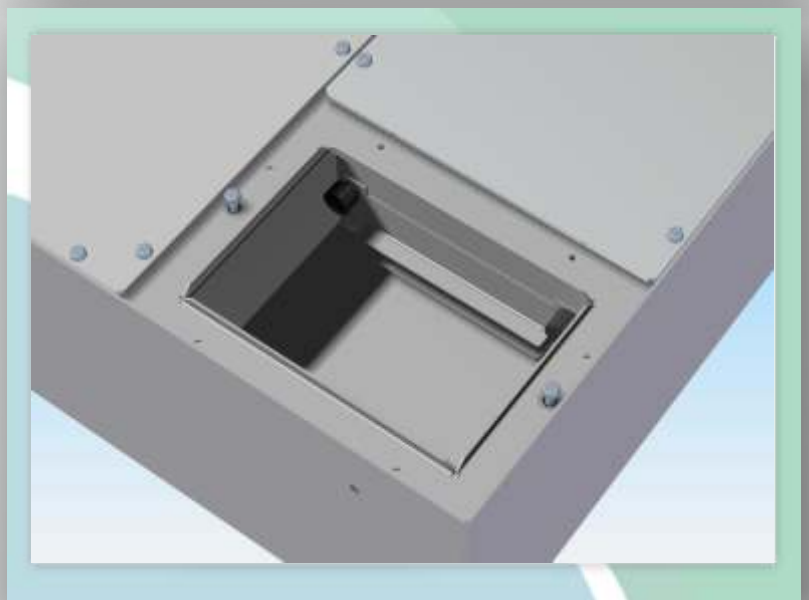
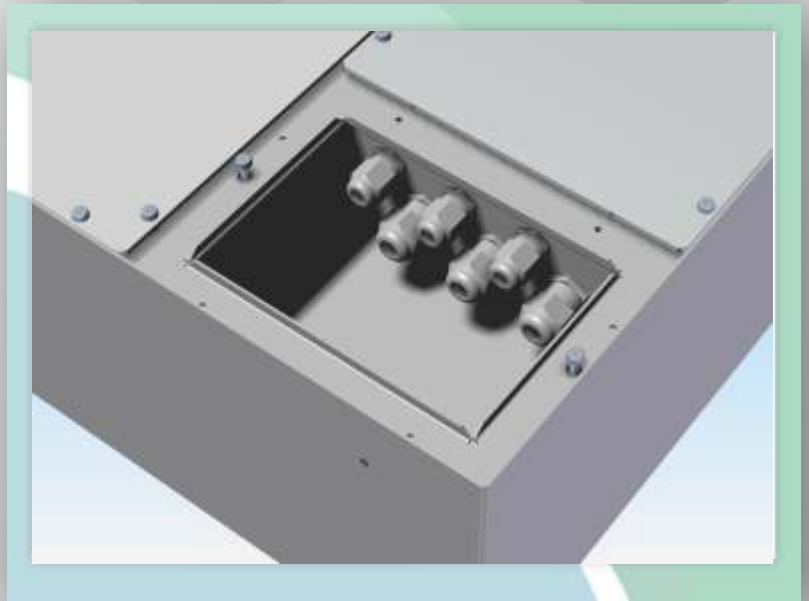
Protection Degrees

The **Fenice** OUTDOOR LCDs guarantee an IP66 protection degree.

The airtight closing prevents dust and water jets from entering.

The protection on the cable exit is guaranteed by six IP68 cable glands.

The “guillotine” model allows you to manage cables with a bigger flexibility, but it downgrades the protection degree to an IP32



Safety Glass

The safety glasses with a double layer of 8mm guarantee a degree of shock resistance that is congruent with the EN356 rules.

The antiglare treatment (optional) avoids the mirror effect and filters the 90% of the UV rays.

Temperature Range

	32"	42"	47"
- 0° + 45°	+ 0 W	+ 0 W	+ 0 W
- 0° + 55°	+ 600 W	+ 800 W	+ 1000 W
- 20° + 45°	+ 300 W	+ 600 W	+ 900 W
- 20° + 55°	+ 600 W	+ 800 W	+ 1000 W
- 38° + 45°	+ 600 W	+ 1000 W	+ 1400 W
- 38° + 55°	+ 800 W	+ 1200 W	+ 1600 W

Absorbed power, that must be added to the basic one, refers to the temperature transit

Technical Specifications

Outdoor LCD

Case	
Covers material	Anodized aluminium
Surface protection	Barrier paint
Surface finishing	Outdoor strong paint
Protection degree	IP66 - against water and dust
Mechanical protection degree	IK10
Reference safety standard	EN60950
Reference standard for glass	EN356
External connection	According to the customer specifications (hermetic multiconnection box)
Protection glass	Laminated, antivandalism, antireflective or antiglare (opt), antistatic, light transmission coefficient 90%
Support for high brightness	Sunlight readable
Thermal control	Winter mode - heater to startup in low temperature (standby) Summer mode - protection against temperature overload Antimoisture device
Ventilation	Internal fan automatic control. Special ventilation system without filters

Physical	
Mains voltage	115 or 230VAC ±15%
Frequency	50/60Hz
Storage	-20°C ~ +65°C
Operating	Refer to the temperature table
RH	85% not condensing
MTBF	> 50000hrs

Accessories	
	Power cable (installed)
	Video cable (installed)
	User manual
	Drivers

Controls	
Video	Brightness, Contrast, Color Sharpness, Color temperature Still frame Source selection
Geometry	Self adj of picture dimension Free adj of picture position Selection of format preset (for compatibility with 4:3 and 16:9 pictures) Uncompressed mode
Audio (opt)	Volume, Balance Equalizer MTS
Others	Programmable OSD aspect Timer Display address selection DPMS Auto input search
Language	English

Technical Specifications

Standard Version

Connections	
Video	CVBS (RCA) SVIDEO Y/C (mini DIN) SVIDEO Differential (RJ45)
Analog RGB	PC (Dsub-15 HD) PC Differential (RJ45) Old Style Low Res (Dsub-9)
Audio (opt)	Video (RCA) RGB (RCA)
Control	RS232 (Dsub-9 female)
Power	Open end cable
Touch screen	USB
Cable length	According to customer's specifications
	<ul style="list-style-type: none"> • There will be available the required connections only • The cable glands guarantee the IP66 protection degree

Features	
Video compatibility	PAL (BGH/D/I, M, N, 60), NTSC (M, 4.43), SECAM
Video signal level	CVBS 1 Vpp / 75 Ohm - nominal (with AGC)
PC compatibility	Automatic frequency detection
PC signal level	RGB: 0.7 Vpp / 75 Ohm (RGB), TTL (HV)
Frequency range	Horizontal: 20 KHz - 82 KHz Vertical: 55 Hz - 90 Hz
Control interface	RS-232 Serial Port OnBoard Keypad Commands and controls are available from any of user's interfaces

PC Version

Configuration	
According to the personal computer configuration	
Typical configuration	
Processor	1.6GHz Fanless
Storage	HD 160Gb or SSD 16Gb
RAM	1Gb
LAN	2 x 10/100/1000
Interfaces	RS232, USB, mouse, keyboard
Video	Embedded
Audio	Embedded
Touch screen	Embedded

Connections	
LAN	RJ45
Power	Open end cable
Internal	USB, RS232, mouse, keyboard, others...
Features	
Control interface	LAN Commands and controls are available from any of user's interfaces

Technical Specifications

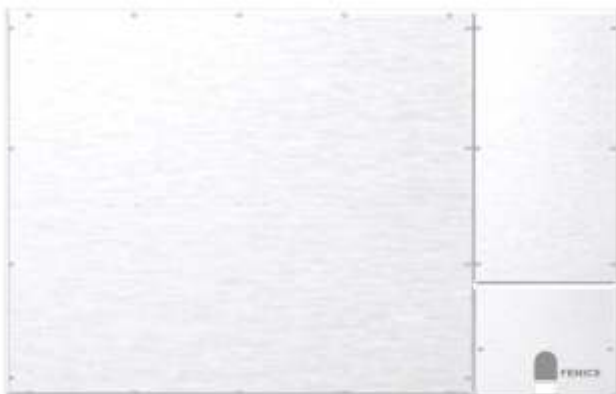
Touch Screen

AntiVandal Projected Capacitive version

Technology	Projected Capacitive
Connectivity	USB v1.1, USB 2.0 compatible
Power	<100mA from 5V USB
Positional Accuracy	<1.5% of reported position in recommended viewing area
Response Time	Direct Touch ~20mS to ~40mS, Through Touch ~60mS
Calibration Drift	Fixed embedded technology, non-contact with active sensor, zero moving parts
Abrasion Resistance	Glass, unaffected by surface scratching
Chemical Resistance	Glass, unaffected by cleaning solutions
Stylus Type	Finger, glove operable
Glass Type	Soda Lime
Sensor Thickness	~7.8mm Direct Touch option ~5.8mm Through Touch option
Light Transmission	~88%.
Surface Finishes	Plain or anti-glare etch Other finishes available upon request
EMC	CE, FCC-B (when fully integrated into final product)
Safety	Laminated glass assembly complies with EN60950, UL60950, UL544
NEMA	Sealable to NEMA 12- 4
Operating	-35°C to +65°C
Storage	-40°C to +70°C
Humidity	0 to 90% RH @ 40°C, unaffected by condensation.
Water	Resistant to water droplets on the surface
Weather	Resistant to snow, ice, rain, sleet, hail, wind, etc.

Technical Specifications

LCD 32"



Display Panel

Screen size	32" (81 cm)
Aspect Ratio	16:9
Resolution	1366x768 pixel
Pixel pitch	0,51x0,51 mm
Brightness	500cd/m ²
Contrast	4000:1 (dyn)
Viewing angle	178°
Colours	16.8 Mil
Response time	8 msec

Features

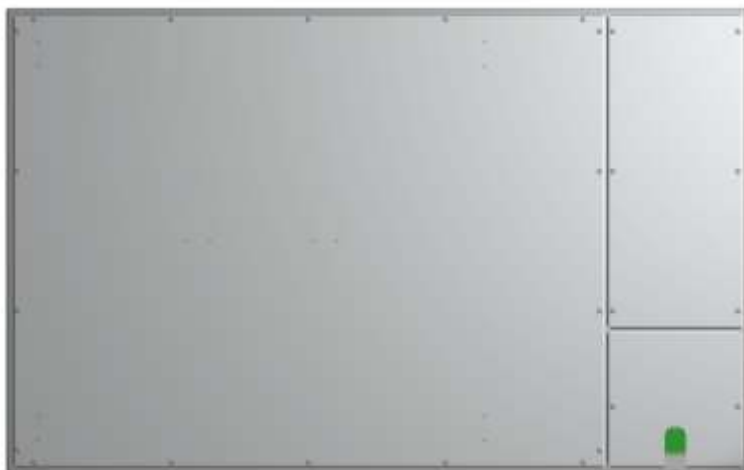
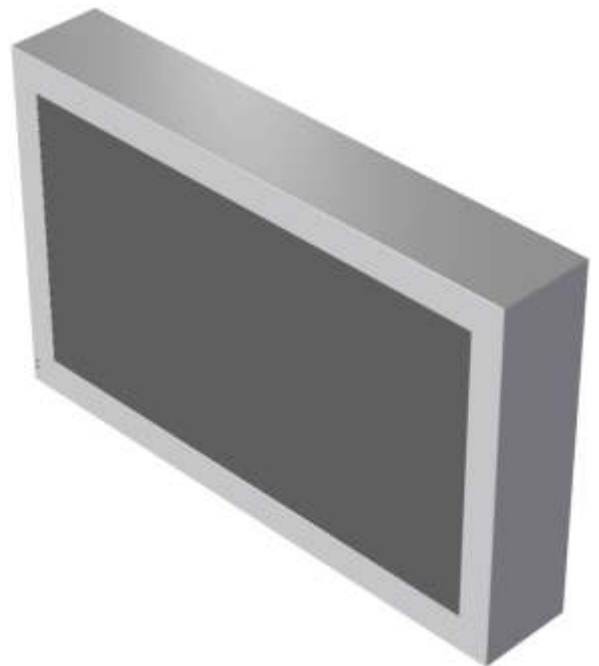
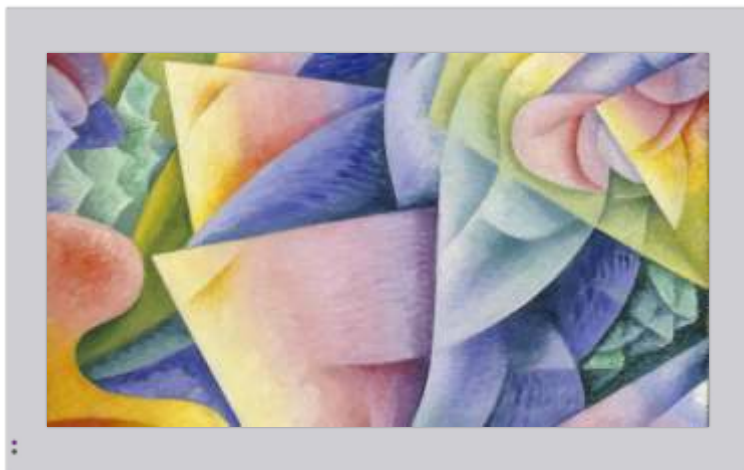
PC compatibility	VGA ~ WXGA (1280x1024), NATIVE (1366x768)
------------------	--

Physical

Dimensions	803 (W) x 508 (H) x 182 (D)
Weight	40Kg
Power	112w + temperature control unit

Technical Specifications

LCD 42"



Display Panel

Screen size	42" (107 cm)
Aspect Ratio	16:9
Resolution	1366x768 pixel
Pixel pitch	0,68 x 0,68 mm
Brightness	500cd/m ²
Brightness (*)	700cd/m ² (optional)
Hi Brightness	1500cd/m ² (optional)
Contrast	4000:1 (dyn)
Viewing angle	178°
Colours	16.8 Mil
Response time	8 msec

Features

PC compatibility	VGA ~ WXGA (1280x1024), NATIVE (1366x768)
------------------	--

Physical

Dimensions	1047 (W) x 657 (H) x 182 (D)
Weight	50Kg
Power	199w + temperature control unit

(*) Blackening defect free

Technical Specifications

LCD 47" Narrow Bezel



Display Panel

blackening defect free

Screen size	47" (119 cm)
Aspect Ratio	16:9
Resolution	1920 x 1080 pixel
Pixel pitch	0,54 x 0,54 mm
Brightness	700cd/m ²
Hi Brightness	1500cd/m ² (optional)
Contrast	9000:1 (dyn)
Viewing angle	178°
Colours	16.8 Mil
Response time	8 msec

Features

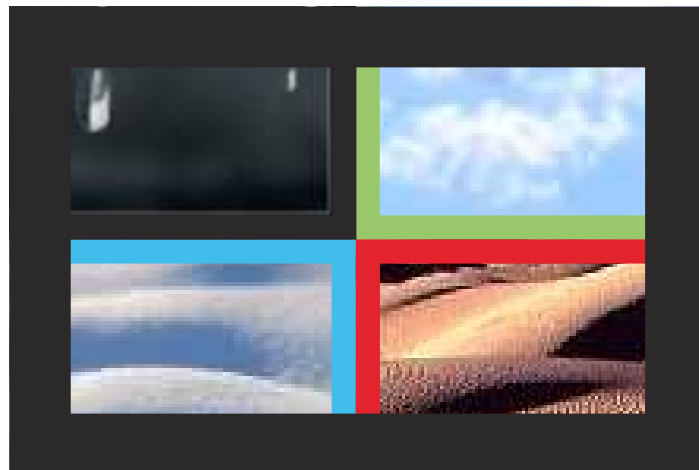
PC compatibility VGA ~ WUXGA (1920x1080),
NATIVE (1920x1080)

Physical

Dimensions	1073 (W) x 618 (H) x 200 (D)
Bezel	16mm
Weight	60Kg
Power	260w + temperature control unit

FENICE

**Good solutions for the
information display**



FENICE

Via Stalingrado 4
San Giorgio di Piano, 40016
Bologna
Tel. 051-6630567
Fax. 051-893990
International
Tel. +39-(0)51-0548920
Fax. +39-(0)51-0544101
<http://www.fenice-srl.it>
fenice@fenice-srl.it

http://www.fenice-srl.it/prodotti_LCD_outd.php