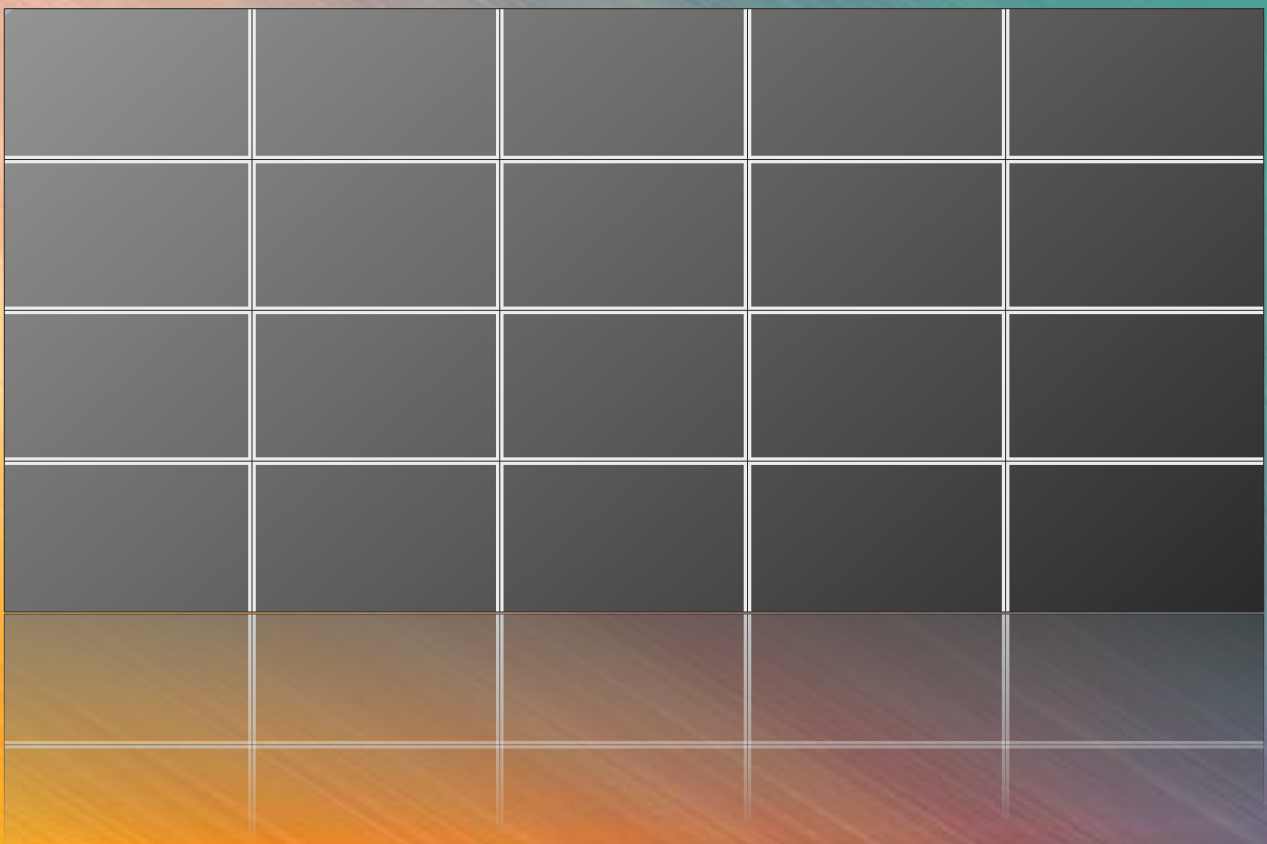


Video Wall



FX(w) Series



47" Narrow Bezel LCD



Video Wall LCD

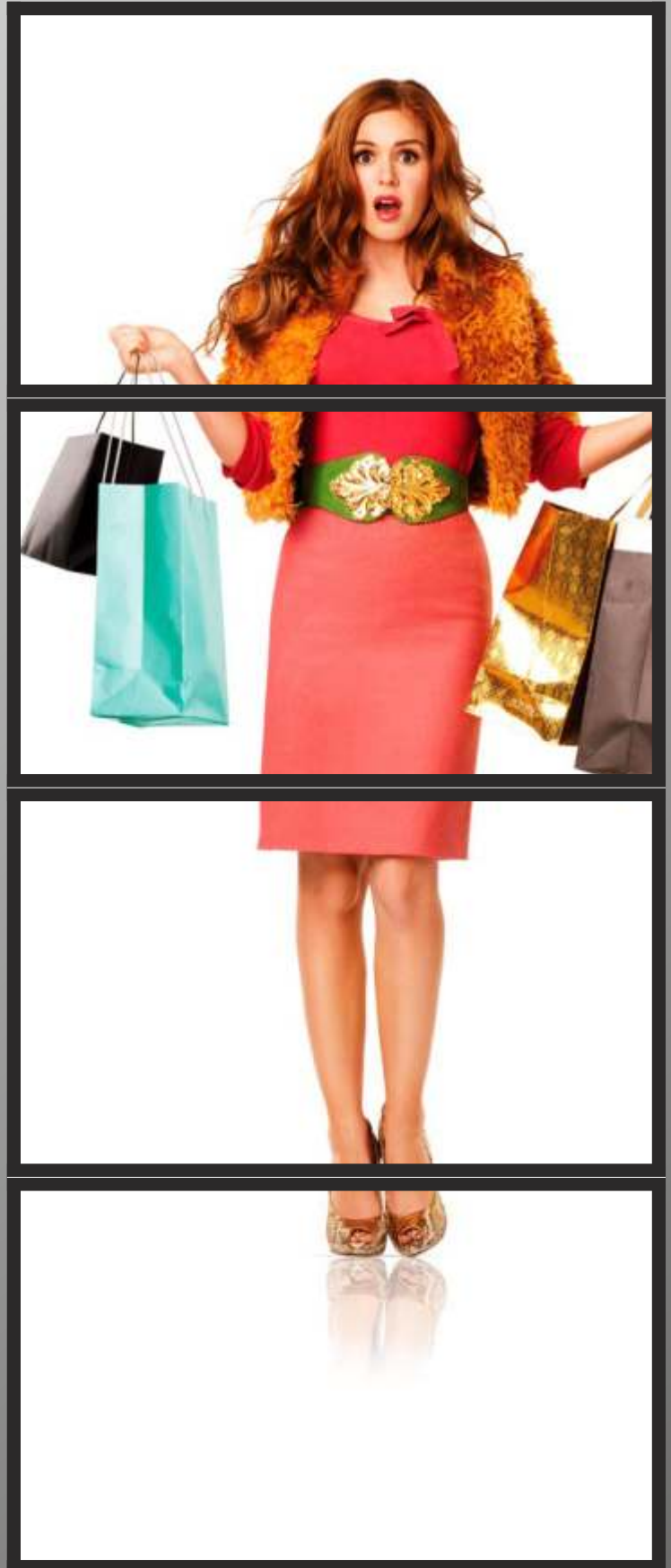
Our LCDs for video wall systems are characterized by a very thin frame and high brightness.

The division between one monitor and the other exalts a style imprisoned between past and future and does not disturb the global vision.

The high brightness guarantees clear and always contrasted images. Sunlight exposure is possible thanks to some special reflective and antiglare filters. The modular structure allows the creation of

designs with high visual impact and allows you to serialize the installation system.

Video wall LCDs are part of our professional LCD range, which is characterized by the high quality of the materials and the constancy of products and characteristics in time.



Configurations



Standard



Column



Stairs



Pyramid

Our modular installation system allows you to realize several configurations, starting from the typical wall, to more complex designs such as the stairs model or the pyramid one.

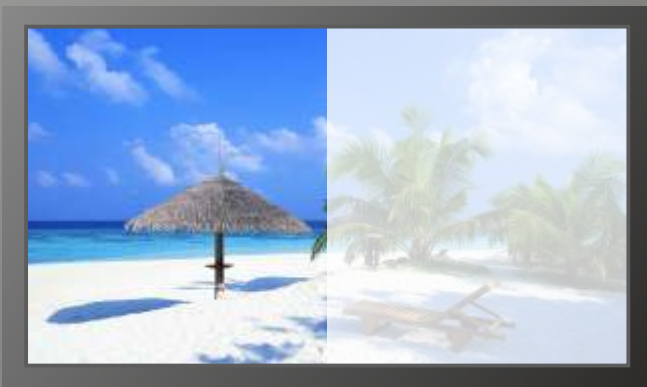
The column-structure expands the idea of the Totem itself, giving a 360° visibility.

Colours

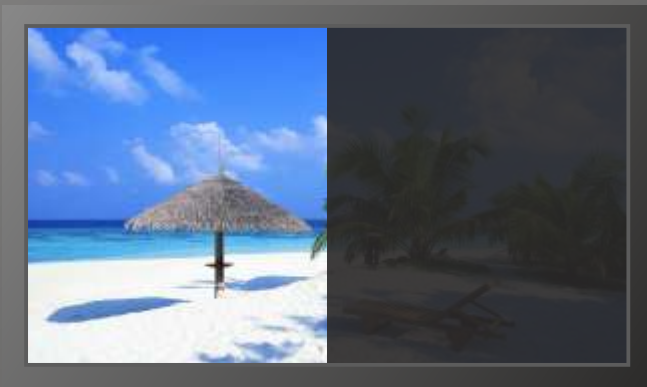
FENICE allows you to customize the frame colour according to the installation needs. The typical black colour can be replaced by one of the colours of the RAL professional line.



Filters



Transfective
polarizer film



Antiglare
glass

LCDs are very sensitive to the sunlight.

High ambient light can make the image matt. This happens because the sunlight opposes and defeats monitor bright power, making the image too clear and impossible to be seen.

FENICE can modify the panels, adding a transfective filter that uses the sunlight in order to increase the image contrast.

Another problem comes from UV ray exposure. In this case, liquid crystals overheat, generating a black image.

To solve the problem, we add a front filter that stops the 90% of the UV rays and prevents the panel from degenerating.

Pass-through connections



If not correctly managed, the video wall requires a high number of connections.

FENICE LCDs have an “entry-exit” system for video signals and power supply.

This allows you to connect monitors in sequence and to simplify the connection system.

The video source will be connected to the first point of the chain and it will be possible to control each monitor by using the RS232.

OutDoor

IP66 Protection degree

FENICE video walls can work in any weather conditions, thanks to the IP66 protection degree.

Rain, snow, ice and hot weather are no more a problem.

Our active cooling and heating systems keep monitor working parameters under safety levels. **FENICE** video walls can work with temperatures up to -38° $+55^{\circ}$.

The components we use have been studied expressly for outdoor applications and they prevent image alteration even in direct sunlight conditions.

This special feature guarantees great performances also for semi-outdoor applications such as shop windows, malls, entrances, etc...



Standard version up to a 5x5 wall

The standard version allows you to connect up to 25 LCD monitors. The video signal is distributed through a daisy chain system, as well as the power supply and the serial control system.

The management is very simple: contents that are transmitted by the video source (PC; DVD or BlueRay player, player, etc ...) are automatically displayed in full screen mode.

FENICE supplies monitors already configured and numbered according to the position they have to take up in the wall.



Hiperwall version beyond any limits



The Hiperwall system allows you to display contemporaneously several video sources on the same video wall.

The external control unit mixes the images and send them to the screens real-time by using standard RJ45 cables.

There are no limits of dimensions or configuration. This system is able to display not only standard films and videos, but also Ultra-high resolution images up to 200Mpixels.

Mechanical Dimensions



47" Narrow Bezel LCD

Dimensions

A	618 mm
B	1.073 mm
C	200 mm

Bezel

DxSx	16,6 mm
UpDw	16,6 mm

Weight

Indoor	35Kg
Outdoor	Refer to the Outdoor literature

Technical Characteristics

Display Panel	blackening defect free
Screen size	47" (119 cm)
Aspect Ratio	16:9
Resolution	1920 x 1080 pixel
Pixel pitch	0,54 x 0,54 mm
Brightness	700cd/m ²
Hi Brightness	1500cd/m ² (optional)
Contrast	9000:1 (dyn)
Viewing angle	178°
Colours	16.8 Mil
Response time	8 msec

Connections	
Standard version (until 5x5 units)	
Analog RGB	IN / OUT
DVI-D	IN / OUT
CVBS	by external converter (opt)
SVideo	by external converter (opt)
Control	RS232 - IN / OUT
Power	VDE - IN / OUT

Hiperwall version (no limits)	
RJ45	IN
Power	VDE - IN / OUT
This version needs lan external control unit and an external GBit Switch. Contact the sales office for additional information.	

Physical	
Indoor version (IP30)	
Mains voltage	115/230VAC ±15%
Frequency	50/60Hz
Power	260w
Storage	-20°C ~ +65°C
Operating	0°C ~ +45°C
RH	85% not condensing

Outdoor version (IP65) - optional (IP66)	
Refer to the Outdoor literature	

Features	
Video compatilby	PAL (BGH/D/I, M, N, 60), NTSC (M, 4.43), SECAM
HDMI	[supporting CEA-861B specs. HDCP 1.1]
DTV	480i/p, 576i/p, 720p, 1080i / 50-60 Hz, 1080p / 60 Hz
Video signal level	CVBS 1 Vpp / 75 Ohm - nominal (with AGC)
PC compatibility	VGA ~ WUXGA (1920x1080), NATIVE (1920x1080) Automatic frequency detection
PC signal level	RGB: 0.7 Vpp / 75 Ohm (RGB), TTL (HV) 1 x DVI-D [Digital RGB, input only]
Frequency range	Horizontal: 20 KHz - 82 KHz Vertical: 55 Hz - 90 Hz
Splitter	Embedded splitter up to 5x5 with bezel compensation
Control interface	RS-232 Serial Port. Commands and controls are available from any of user's interfaces
Loophrough unit	RS-232 pass-through VGA pass-through DVI-D pass-through

Accessories	
	Power cable
	Video cable
	RS232 cable
	User manual

Options	
	Safety glass



Via Stalingrado 4
San Giorgio di Piano, 40016
Bologna
Tel. 051-6630567
Fax. 051-893990
International
Tel. +39-(0)51-0548920
Fax. +39-(0)51-0544101
<http://www.fenice-srl.it>
fenice@fenice-srl.it

<http://www.fenice-srl.it>